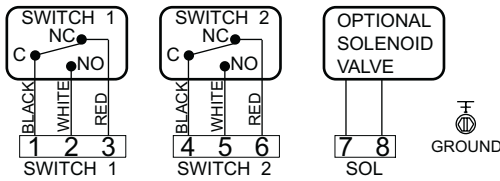
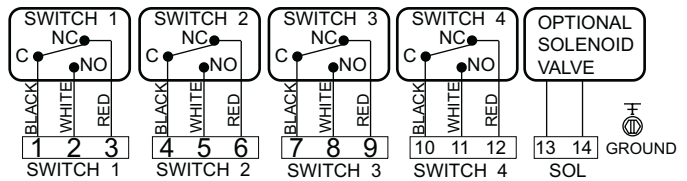


# SVF Flow Controls

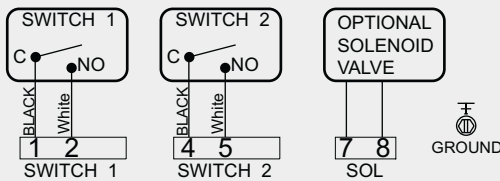
## Wiring Diagrams



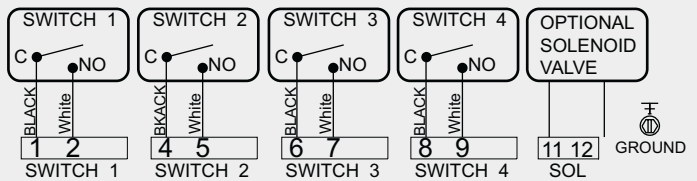
**2 SPDT switches (Form C)**  
Cherry Mechanical  
Tungsten TTL  
Rhodium TTL



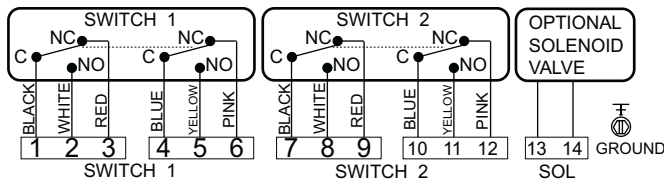
**4 SPDT switches (Form C)**  
Cherry Mechanical  
Tungsten TTL  
Rhodium TTL



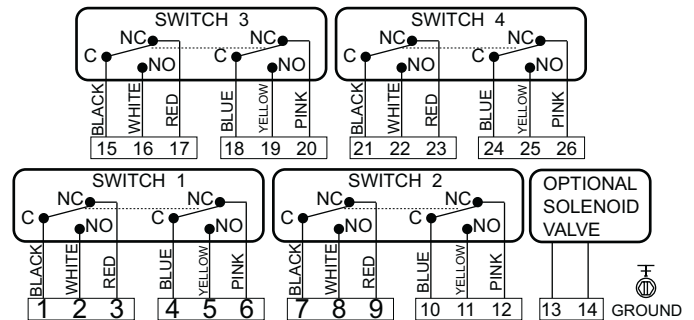
**2 SPST switches (Form A)**  
Bifurcated TTL



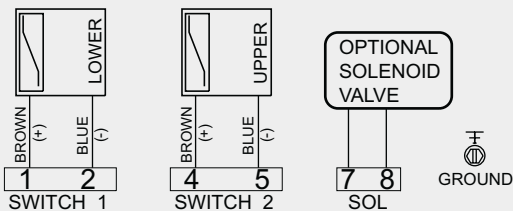
**4 SPST switches (Form A)**  
Bifurcated TTL



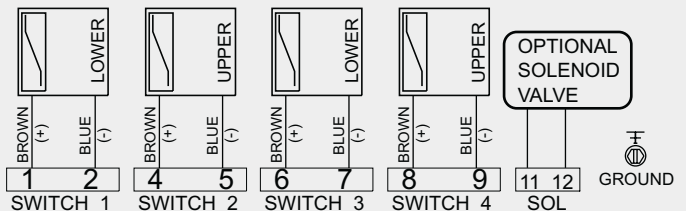
**2 DPDT switches (Form ZZ)**  
ITW



**4 DPDT switches (Form ZZ)**  
ITW



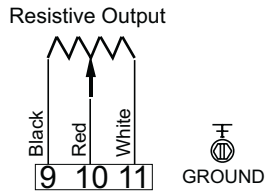
**2 - 2-wire Inductive Sensors**  
any type



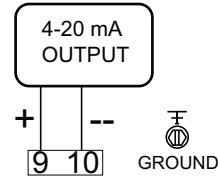
**4 - 2-wire Inductive Sensors**  
any type

# SVF Flow Controls

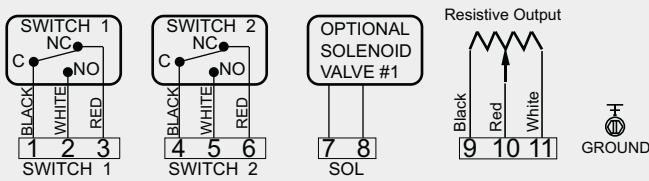
## Wiring Diagrams



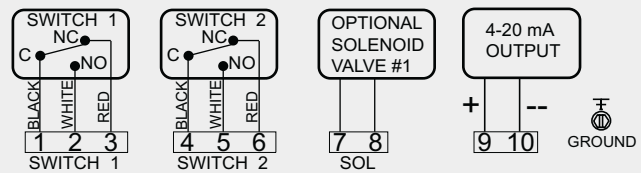
**Resistive Output**  
0 - 1000 ohm  
0 - 50 ohm



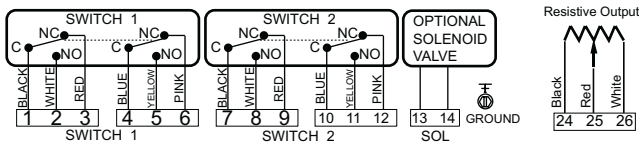
**Current Output**  
4 - 20 mA



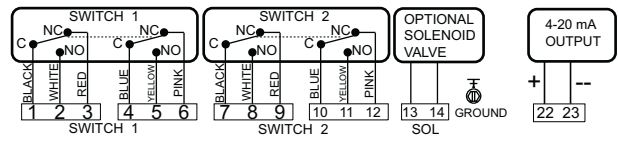
**2 SPDT switches (Form C)  
with Resistive Output**  
Cherry Mechanical  
Tungsten TTL  
Rhodium TTL



**2 SPDT switches (Form C)  
with Current Output**  
Cherry Mechanical  
Tungsten TTL  
Rhodium TTL



**2 DPDT switches (Form ZZ)  
with Resistive Output**  
ITW



**2 DPDT switches (Form ZZ)  
with Current Output**  
ITW

*for additional wiring diagrams for products not listed here, please contact SVF*