



Series 41 Rev 3, Class 150, Regular Port, Sizes 1-1/2" ~ 4"

Design Features

- ✓ Standard Fire Safe Certification to API-607-5, Anti-Static
- ✓ Standard NACE MR0175
- ✓ Standard Seat Material TFM1600 to satisfy applications that have typically required two different seat materials (TFE and RTFE)
- ✓ SupraLon™ Seats for higher temperature, steam, and thermal fluid applications
- ✓ Latch lock handle fully compatible with OSHA clamp for Lock-Out/Tag-Out
- ✓ Produced through a heritage of precision casting methods
- ✓ All processes internationally certified
- ✓ Live-Loaded Stem Seal

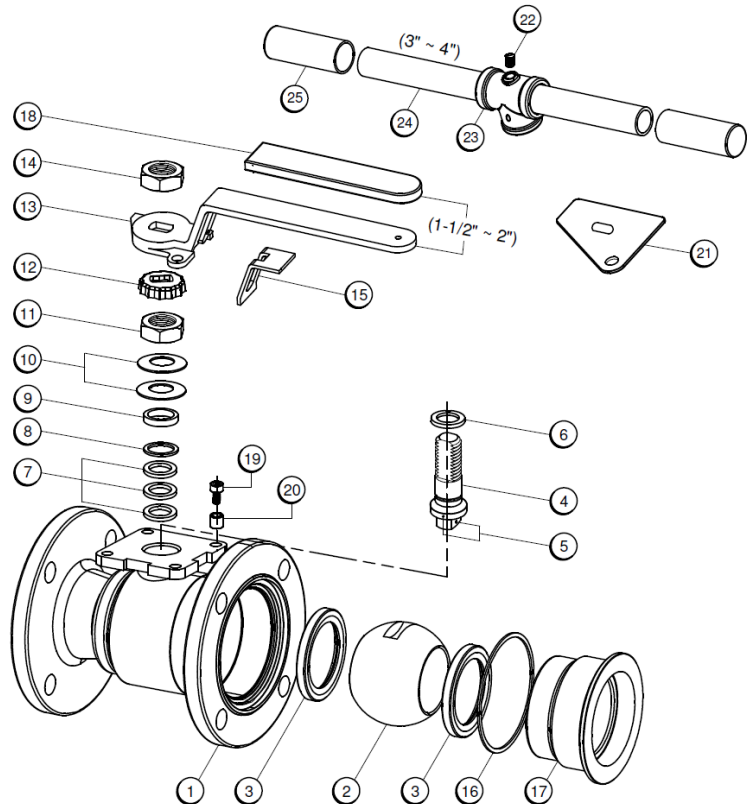


SPECIFICATION STANDARDS OF COMPLIANCE

- ☑ Design - ASME B16.34, NACE MR0175
- ☑ Face to Face: ASME B16.10
- ☑ End Flange: ASME B16.5
- ☑ Wall Thickness: ASME B16.34
- ☑ Fire Safe: API 607 5th 2005, ISO 10497
- ☑ Inspection & Testing: API 598, and optional API 6D

Materials of Construction

ITEM #	PART NAME	MATERIALS	
1	Body	A351-CF8M	A216-WCB
2	Ball	A351-CF8M	
3	Ball Seat	TFM1600	SupraLon™
4	Stem	SUS316	
5	Anti-Static Device	SUS316	
6	Thrust Washer	SupraLon™	
7	V-Ring Packing	GRAFOIL®	PTFE
8	Bushing	SUS304	
9	Gland	SUS316	
10	Belleville Washer	SUS301	
11	Stem Nut	A194-8	
12	Lock Tab	SUS304	
13	Handle (1-1/2" ~ 2")	A351-CF8	
14	Handle Nut (1-1/2" ~ 2")	A194-8	
15	Lock Device (1-1/2" ~ 2")	SUS304	
16	Body Gasket	GRAFOIL®	PTFE
17	End Cap	A351-CF8M	A216-WCB
18	Handle Sleeve (1-1/2" ~ 2")	VINYL PLASTIC	
19	Stop Bolt	A193-B8	
20	Stop Washer	SUS304	
21	Triangular Stopper (3" ~ 4")	SUS304	
22	Set Screw (3" ~ 4")	A193-B8	
23	Pipe Handle Adapter (3" ~ 4")	A351-CF8	
24	Pipe Handle (3" ~ 4")	SUS304	
25	Pipe Handle Sleeve (3" ~ 4")	VINYL PLASTIC	



Document #A41-HU3-0/U9 [Series 41 Rev 3 Data Sheet - 0/09/2009]

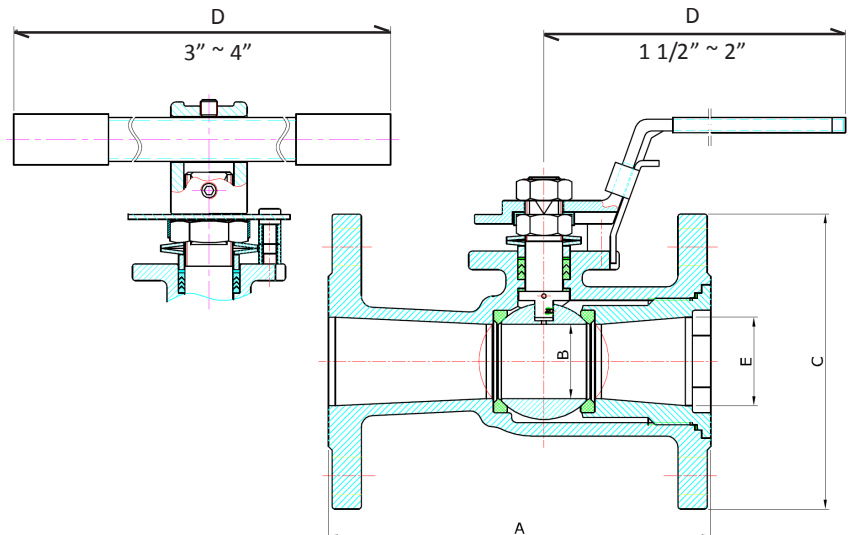
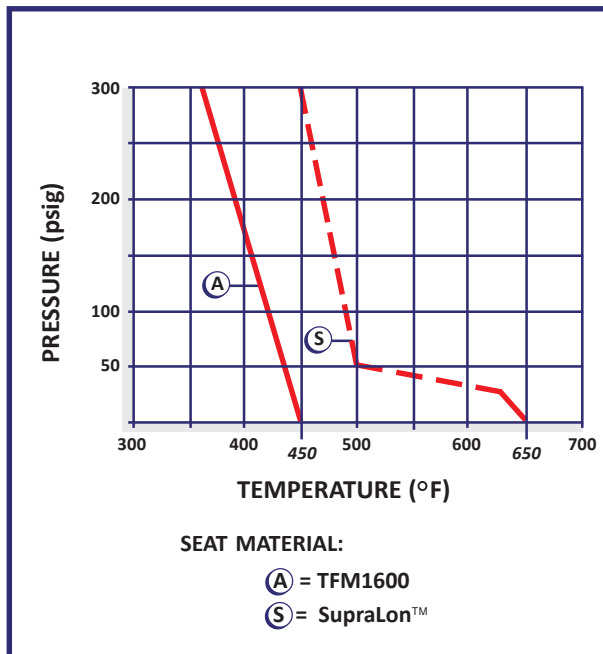


Series 41 Rev 3, Class 150, Regular Port, Sizes 1-1/2" ~ 4"

Dimensions, Weight, Cv, Torque

Size	A	B (Dimensions shown in inches)				E	Wt. (lbs)	Cv	Torque @ 285 psig	
									TFM 1600	SupraLon™
1-1/2"	6.50	1.26	5.00	7.87	1.50	10	130	208	254	
2"	7.00	1.50	6.00	7.87	1.97	15	200	299	368	
3"	8.00	2.37	7.50	11.81	2.99	31	450	598	728	
4"	9.00	2.99	9.00	15.75	3.86	48	600	988	1209	

PRESSURE/TEMPERATURE CHART



Document #A41-R03-0709 [Series 41 Rev 3 Data Sheet - 07/09/2009]

How To Order

SERIES	BODY	SEATS	SEALS	REV DESIGNATION	SIZE
41 = Regular Port	4 = CS	A = TFM1600	G = GRAFOIL®	R3 = Rev3	15 = 1-1/2"
	6 = SS	S = SupraLon™	T = TFE		20 = 2"
					30 = 3"
					40 = 4"
<i>Example: 41</i>	4	A	G	R3	15 (Order 414AGR315)