

## Direct-Mount Actuator Attachment

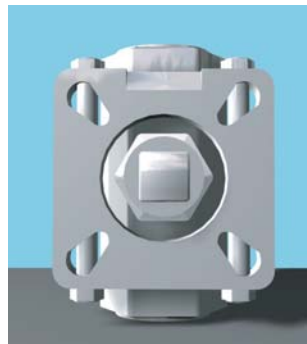
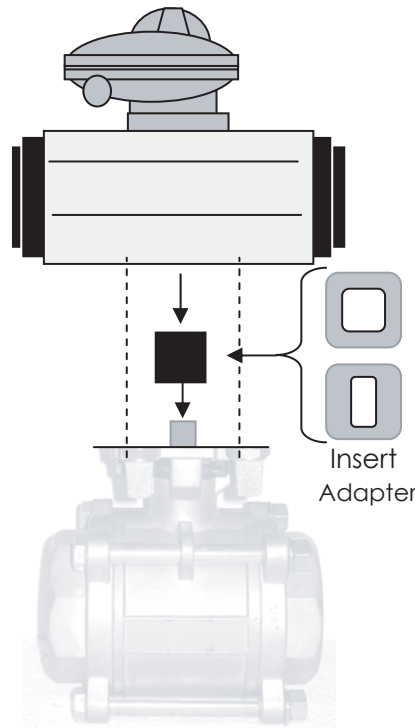
EZ9 Valves are specifically designed for “EZ Automation” Each valve features a top mounting pad that is dimensionally identical to the standard ISO-5211 mounting design found on most of today’s pneumatic and electric actuators. The “Direct Mount” feature helps create a low profile package that eliminates mounting hardware, improves product availability, and ensures a reliable and economical automated valve.



### Limit Switch

#### Product Features

- Rugged and Compact design
- Quick-Set cam is spring loaded and does not require any special tools
- Dual Cable Entries to facilitate wiring in the field and the addition of ancillary devices (Pilot Valve)
- Captive Cover Bolts will not get lost during commissioning
- NAMUR mounting for universal use
- Selection of Mechanical or Proximity switch/sensors



**ISO-5211 for Direct Mount Actuation**



### Pilot Valve

#### Product Features

- High Flow Capacity (Cv=0.7)
- Anodized aluminum for corrosion resistance
- Integral Manual Override
- Rated for Continuous Duty
- NAMUR universal interface
- Selection of voltages.
- Low Watt (<3W) for Asi and Device Net applications
- NEMA-4 or 7 available
- Speed control option