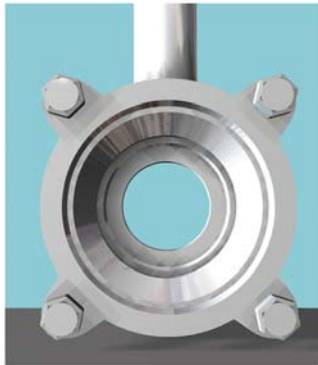


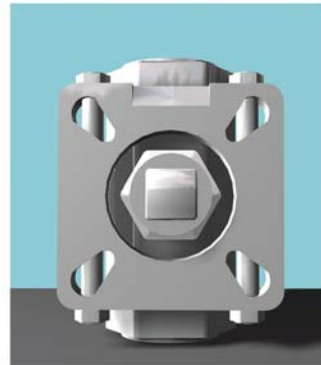
- Dual Pattern ISO-5211 “Direct-Mount” Actuator Attachment
- Live-Loaded Stem Seals
- One-Piece Seat/Seal (TFM)
- Integral Locking Device
- Three-Piece Construction
- End Connections: NPT, SW, BW
- Engineered Stem Seal Design
- Full Port Opening
- 316 Stainless Steel construction. Carbon Steel valves feature a 316 SS Center Section
- Blow Out Proof Stem



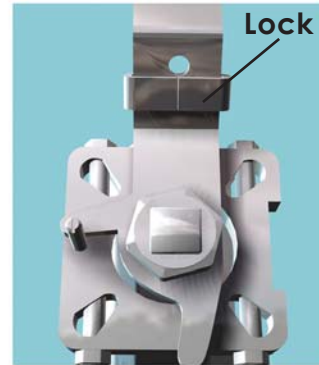
Size Range 1/4" to 2" Full Port



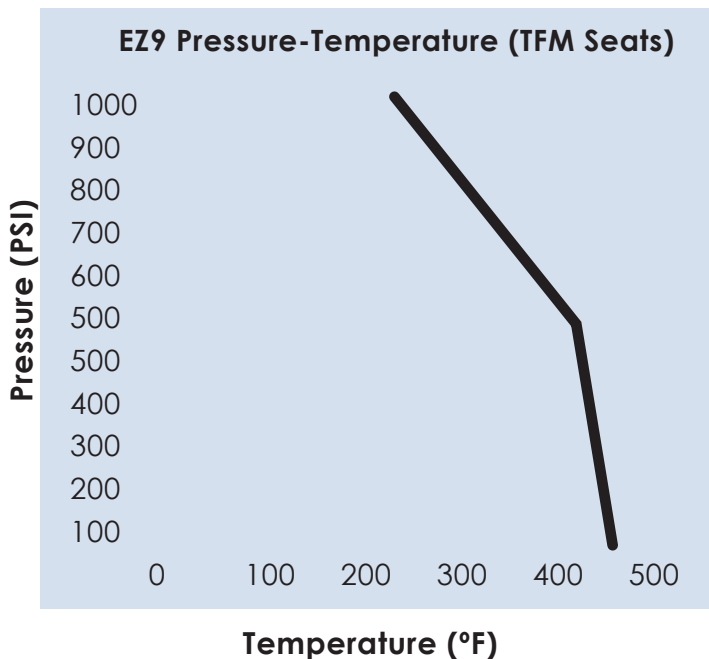
Full Port Opening
(NPT, SW, BW)



ISO-5211 for
Direct Mount Actuation



Integral
Locking Device



PERFORMANCE DATA (Cv)

Valve Size	Approximate Flow (Cv)
1/4-1/2"	12
3/4"	32
1"	57
1.25"	80
1.5"	104
2"	240

All Valves Are Full Ported.

