



Scan the barcode with your SmartPhone app and view the latest publication of this document

Series D8/T7 Ball Valve

Three-Piece Diverter Ball Valve

Sizes 1/4" ~ 2"

D8/T7

The SVF Series D8/T7, three piece diverter valve represents the next generation in design and performance. This process quality, high-performance ball valve has been engineered and manufactured to meet all of the industry standards for quality and performance.

SERIES D8/T7 DESIGN FEATURES

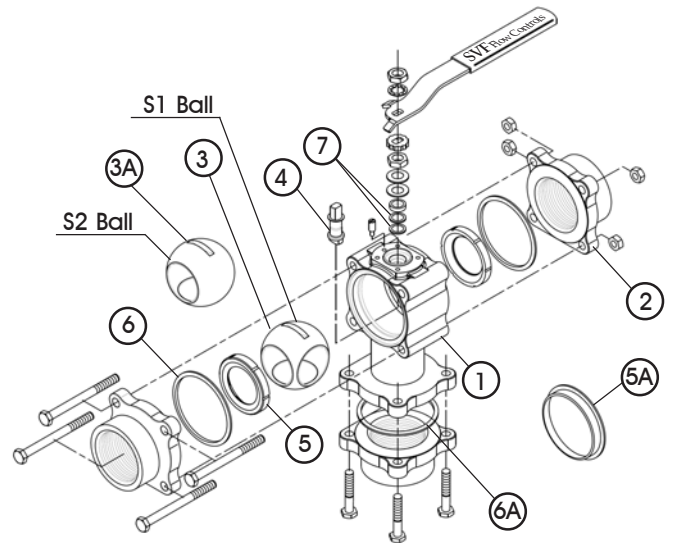
- ✓ Available in a variety of flow patterns
- ✓ Self-relieving seats that reduce operating torque and improve seat life
- ✓ Encapsulated body seals to facilitate welding without disassembly (D8 Only)
- ✓ Live-loaded stem seal ensures seal-tight pressure containment even under thermal cycling
- ✓ Three-piece "swing out" design offers easy access for in-line maintenance
- ✓ ISO 5211 mounting pad for easy actuation
- ✓ Standard seat material on D8 Series is TFM1600™
- ✓ Blowout proof stem adds safety & reliability
- ✓ Full range of options to suit specific requirements



The Series D8/T7 Ball Valve is available with additional options. Contact SVF for more information.

MATERIALS OF CONSTRUCTION

ITEM	DESCRIPTION	MATERIALS SPECIFICATIONS (Additional options available)
1	Body	316 Stainless Steel (ASTM A351 CF8M) Carbon Steel (ASTM A216 WCB)
2	End Connector	316L Stainless Steel (ASTM A351 CF3M) Carbon Steel (ASTM A216 WCB)
3	Ball (S1 = 90°)	316 Stainless Steel (ASTM A351 CF8M)
3A	Ball (S2 = 180°)	
4	Stem	316 Stainless Steel (ASTM A276)
5	Seat (D8)	TFM1600™, Delrin®, UHMWPE, PEEK, SupraLon®
5A	Seat (T7)	PTFE, NRG (1 Piece Seat & Seal)
6	Body Seal (D8)	PTFE, Buna "N", GRAFOIL®, UHMWPE, Viton®, EPDM, SupraLon®
6A	Body Seal (T7)	PTFE, GRAFOIL®, SupraLon®
7	Stem Seal	SupraLon®



SPECIFICATION STANDARDS OF COMPLIANCE

SVF Series D8/T7 Ball Valves are available in designs that meet the following Industry Standards:

- ANSI
- NACE
- DIN
- ASME
- ASTM
- ISO
- API
- MSS

Contact SVF for specific applications

What do you need today?™

HIGH PURITY
CleanFLOW

PRO-SPEC
PROCESS SPECIFIC
WWW.PRO-SPEC.NET

SVFProjects
MANAGEMENT RESOURCE TOOL
WWW.SVFPROJECTS.NET

Specifications subject to change. Please visit www.SVF.net for the latest updates on this Data Sheet. All Data Sheets posted on our website supersede all prior publications • [Document #SVF_D8-T7_Data_Sheet • 11/14/2011]

www.SVF.net

SVF Flow Controls, Inc. • 13560 Larwin Circle • Santa Fe Springs, CA 90670 • Tel: 1.800.783.7836 • FAX: 562.802.3114
Sales@SVF.net • Visit our website: www.SVF.net • © SVF Flow Controls, Inc. • Specifications subject to change without notice



Scan the barcode with your SmartPhone app and view the latest publication of this document

Series D8/T7 Ball Valve

Three-Piece Diverter Ball Valve

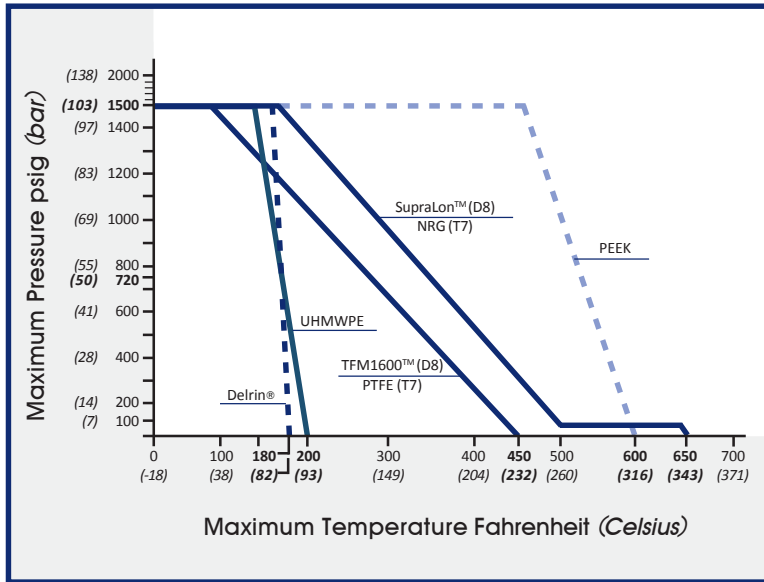
Sizes 1/4" ~ 2"

D8/T7

DIMENSIONS, WEIGHT, Cv, TORQUE

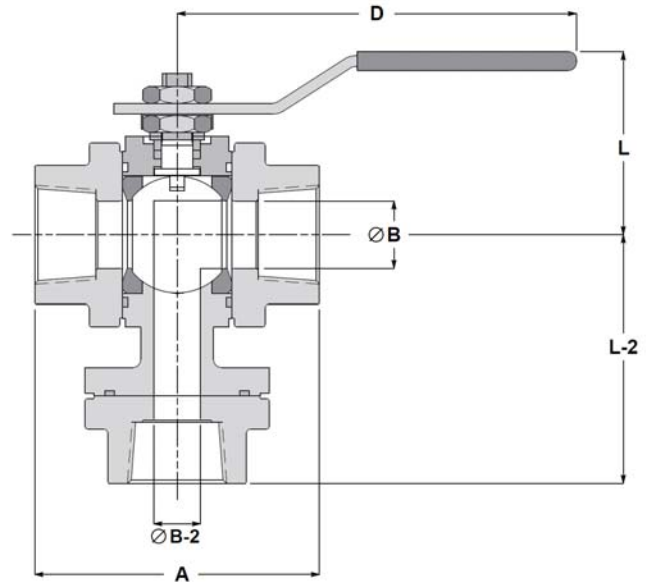
Size	A		B		B-2		D		L		L-2		Weight. lbs kg	Cv	Torque**		
	in.	mm	in.	mm	in.	mm	in.	mm	in.	mm	in.	mm			in-lb _f	Nm	
1/4"*	2.60	66	0.41	10	0.38	10	5	127	1.8	46	2.75	70	2	0.9	3	45	5
3/8"*	2.60	66	0.41	10	0.38	10	5	127	1.8	46	2.75	70	2	0.9	3	45	5
1/2"	2.60	66	0.41	10	0.38	10	5	127	1.8	46	2.75	70	2	0.9	5	45	5
3/4"	2.81	71	0.56	14	0.47	12	5	127	1.9	48	2.75	70	2	0.9	5	45	5
1"	3.70	94	0.81	21	0.63	16	6	152	2.4	61	3.45	88	4	1.8	10	100	11
1-1/2"	4.57	116	1.25	32	1.05	27	7	178	3.2	81	4.27	109	7	3.2	27	280	32
2"	5.04	128	1.50	38	1.38	35	7	178	3.3	84	4.50	114	11	5.0	36	360	41

D8/T7 - PRESSURE/TEMPERATURE CHART



* 1/4" and 3/8" are Full Port

** At full differential pressure for clean fluids with TFM1600™ Seats



HOW TO ORDER SERIES D8/T7 BALL VALVES

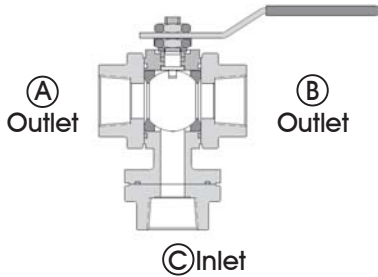
SERIES	BODY & END MATERIAL	BALL & STEM MATERIAL	SEAT	BODY SEAL	ENDS	BALL	SIZE
D8	44 = Carbon Steel ASTM A216 WCB	66 = 316 Stainless Steel ASTM A351 CF8M Ball A276 316 Stem	A = TFM1600™ D = Delrin® U = UHMWPE K = PEEK Requires 17-4 Stem S = SupraLon™	T = PTFE B = Buna "N" G = GRAFOIL® U = UHMWPE V = Viton® E = EPDM S = SupraLon™	SE = Screwed Ends (FNPT) SW = Socket Weld Ends BW = Butt Weld Ends Other End Connection Options Available	S1 = 90° S2 = 180°	02 = 1/4" 03 = 3/8" 05 = 1/2" 07 = 3/4" 10 = 1" 15 = 1-1/2" 20 = 2"
T7	66 = Stainless Steel ASTM A351 CF8M Body CF3M 316L Ends	6M = Stainless Steel 17-4pH ASTM A564 630 Stem Only	T = PTFE N = NRG				
<p>Order Example: (D84466ATSE105)</p> <p>Example Description: Carbon Steel Body & Ends, 316 SS Ball & Stem, TFM1600™ Seat, PTFE Body Seal, Screwed Ends (FNPT), 90° Ball, 1/2" Size</p>							
D8	44	66	A	T	SE	S1	05

Specifications subject to change. Please visit www.SVF.net for the latest updates on this Data Sheet. All Data Sheets posted on our website supersede all prior publications • [Document #SVF_D8-T7_Data_Sheet • 11/14/2011]



Scan the barcode with your SmartPhone app and view the latest publication of this document

D8 DIVERTER VALVE FLOW PATHS

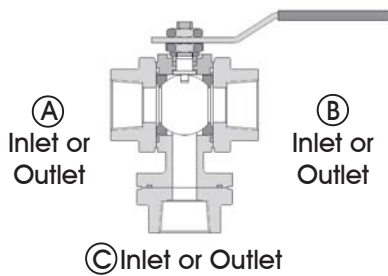


The **D8 Diverter Valve** consists of a two-piece seat and body seal with the inlet at Port C.

Flow Paths are:

- Inlet Port (C) to Outlet Port (A)
- Inlet Port (C) to Outlet Port (B)

T7 THREE-WAY VALVE FLOW PATHS



The **T7 Three-Way Valve** consists of a one-piece seat and body seal, allowing the inlet to be at any one of the ports A, B, or C.

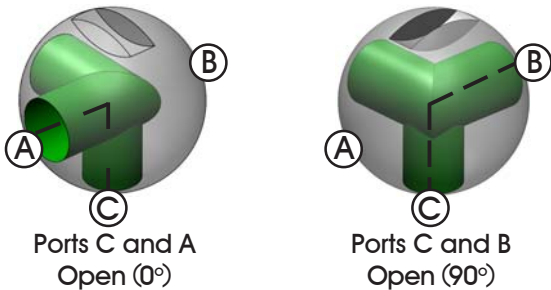
Flow Paths are:

- Inlet Port (C) to Outlet Port (A)
- Inlet Port (C) to Outlet Port (B)
- Inlet Port (A) to Outlet Port (C)
- Inlet Port (B) to Outlet Port (C)

OPERATION

The D8 Diverter Valve or T7 Three-Way Valve can be supplied with either 90° operation (S1 ball) or 180° operation (S2 ball).

S1 (90° Operation)

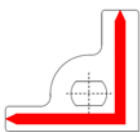


Ports C and A
Open (0°)

Ports C and B
Open (90°)

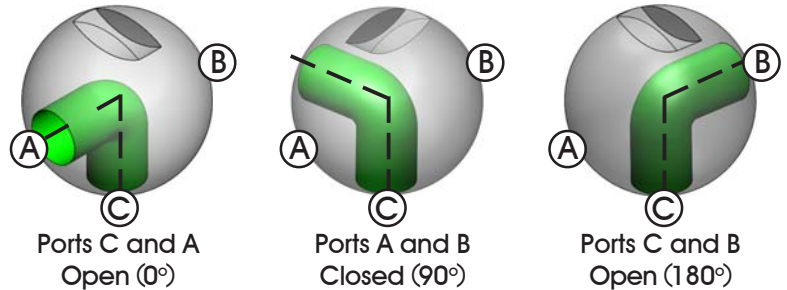
For S1 (90° Operation), the Stop Plate is an integral part of the handle.

NOTE: It is normal that media will flow from Port "C" to both Ports "A" & "B" while the ball is being rotated from one flow path to the other.



Contact SVF for additional flow paths

S2 (180° Operation)

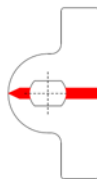


Ports C and A
Open (0°)

Ports A and B
Closed (90°)

Ports C and B
Open (180°)

For S2 (180° Operation), the Stop Plate is a separate part.



NOTE: Media flow will not occur when the handle is in-line (parallel) with the body of the valve. This is the CLOSED/SHUT-OFF position.

Refer to the D8/T7 IOM for additional information.
www.svf.net/IOM/SVF_D8-T7_IOM.pdf