

The A2D-10 Double Acting pneumatic rack & pinion actuator is manufactured using the latest materials and methods to provide dependable and smooth operation in demanding process control conditions.

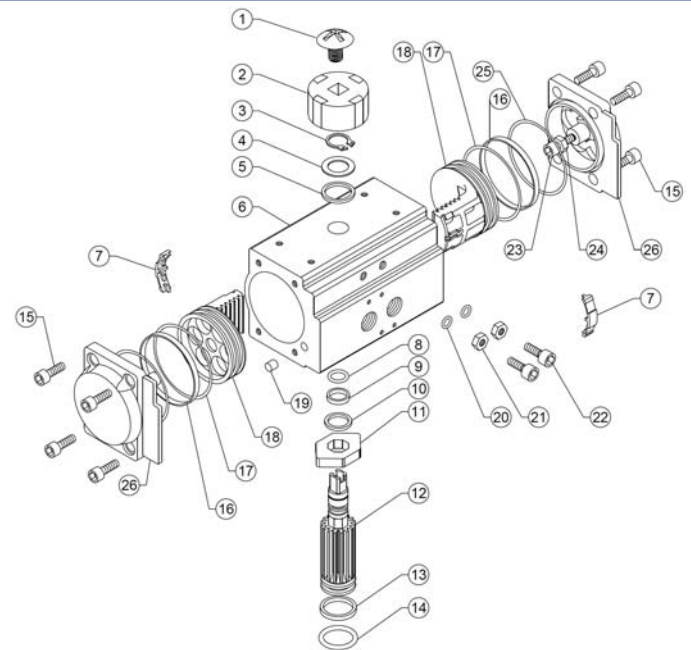
aero² A2D-10 DESIGN FEATURES

- ✓ Hard Anodized aluminum housing
- ✓ "Versa-View" Continuous mechanical position indicator
- ✓ Nickel Plated Alloy drive shaft
- ✓ ISO/NAMUR design for universal mounting and accessory attachment
- ✓ Bi-Directional Stroke Adjustment
- ✓ 1/4" NPT air inlet manifold
- ✓ Actuator is designed for 120 psi supply air pressure



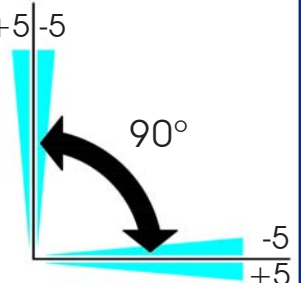
MATERIALS OF CONSTRUCTION

ITEM	DESCRIPTION	MATERIALS SPECIFICATIONS
1	Indicator Cap Screw	Plastic/Stainless Steel
2	Position Indicator	Plastic (ABS)
3	Pinion Snap Ring	Stainless Steel 300 Series
4	Thrust Washer	Stainless Steel 300 Series
5	Thrust Bearing	Polyoxymethylene (Delrin®)
6	Body	Extruded Aluminum Alloy
7	Piston Guide	Polyoxymethylene (Delrin®)
8	O-Ring (Pinion Top)	Buna "N"
9	Bearing (Pinion Top)	Polyoxymethylene (Delrin®)
10	Inside Washer	Polyoxymethylene (Delrin®)
11	Stroke Adjustment Stop	Alloy Steel
12	Pinion (Drive Shaft)	Nickel Plated Alloy Steel
13	Bearing (Pinion Bottom)	Polyoxymethylene (Delrin®)
14	O-Ring (Pinion Bottom)	Buna "N"
15	End Cap Screw	Stainless Steel 300 Series
16	Bearing (Piston)	Polyoxymethylene (Delrin®)
17	O-Ring (Piston)	Buna "N"
18	Piston	Aluminum
19	Plug	NBR
20	O-Ring (Adjust Screw)	Buna "N"
21	Stop Nut (Adjust Screw)	Stainless Steel 300 Series
22	Adjust Screw	Stainless Steel 300 Series
23	Stop Screw	Stainless Steel 300 Series
24	Nut (Stop Screw)	Stainless Steel 300 Series
25	O-Ring (End Cap)	Buna "N"
26	End Cap	Aluminum



BI-DIRECTIONAL STROKE ADJUSTMENT

All *aero²* actuators feature bi-directional $+5$ -5 pinion travel stops. These stops allow for true $+/-5^\circ$ for valve travel adjustment to ensure precise positioning in all flow control services. The *aero²* travel stops are designed to absorb the maximum rated torque of the actuator and the maximum impact loads associated with the recommended stroke speed.



What do you need today?™

HIGH PURITY
CleanFLOW™

PRO-SPEC
PROCESS SPECIFIC
WWW.PRO-SPEC.NET

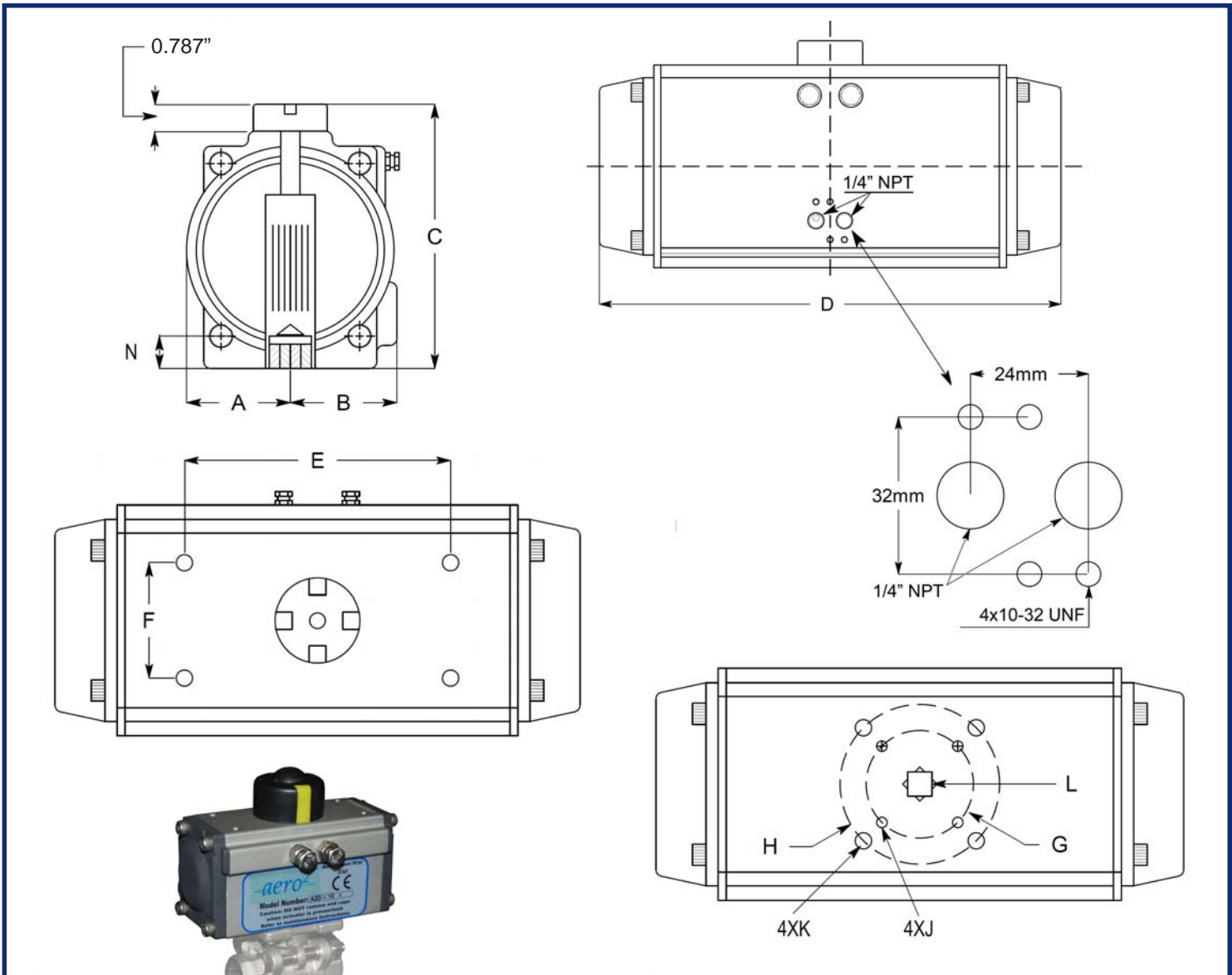
QUALITY FLOWS
THROUGH US

High Performance Miniature Pneumatic Actuator

A2D-10

A2D-10 *aero*² DIMENSIONAL TABLE (INCHES), WEIGHT

A	B	C	D	E	F	G	H	J	K	L sq N (Depth)	Weight
1.12	1.44	3.15	4.80	3.15	1.18	F03/1.42	F05/1.97	#10-32UNF	1/4"-20UNC	0.43 0.55	2 lbs 1 kg



A2D-10 DOUBLE ACTING TORQUE (lbf-in)

Supply Pressure (psig)	40	60	80	100
Double Acting Torque (lbf-in)	55	85	115	142

HOW TO ORDER A2D-10 ACTUATORS

Order the A2D-10 Actuator with the Model #: **A2D-10**

(The A2D-10 is only available as Double Acting with Buna "N" Seals. No additional options are available for this Model).