



Scan the barcode with your
SmartPhone app and view the
latest publication of this document

Series 41 Rev3 Flanged Ball Valve

ANSI Class 150, Standard Port
Sizes 1-1/2" ~ 6"

41
Rev3

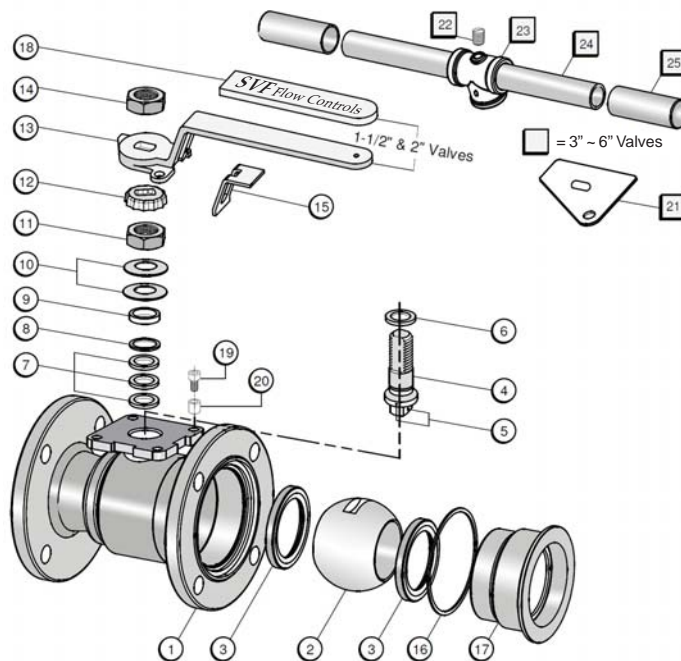
The SVF Series 41 Rev3 Flanged Ball Valves are high performance, standard port valves certified to API-607, and feature an ISO 5211 mounting pad for easy actuation. An OSHA compatible latch-lock handle comes standard, and a variety of seats and seals are available for a wide range of industrial applications.

SERIES 41 REV3 DESIGN FEATURES

- ✓ Standard ported valves certified to API-607, Anti-Static
- ✓ Standard NACE MR0175
- ✓ Live-loaded stem packing ensures seal-tight pressure containment even under thermal cycling
- ✓ Standard seat material is TFM1600™
- ✓ Optional SupraLon™ Seats for higher temperature, steam, and thermal fluid applications
- ✓ ISO 5211 mounting pad for easy automation
- ✓ Compatible with a full range of actuators and accessories
- ✓ Latch lock handle fully compatible with OSHA clamp for Lock-Out/Tag-Out



The Series 41 Rev3 Flanged Ball Valve is available with additional options. Contact SVF for more information.



MATERIALS OF CONSTRUCTION

ITEM	DESCRIPTION	MATERIALS SPECIFICATIONS (Additional options available)
1	Body	A351 CF8M, A216 WCB
2	Ball	A351 CF8M
3	Ball Seat	TFM1600™, SupraLon™
4	Stem	SUS316
5	Anti-Static Device	SUS316
6	Thrust Washer	SupraLon™
7	V-Ring Packing	GRAFOIL®, PTFE
8	Bushing	SUS304
9	Gland	SUS316
10	Belleville Washer	SUS301
11	Stem Nut	A194 8
12	Lock Tab	SUS304
13	Handle (1-1/2" ~ 2")	A351 CF8
14	Handle Nut (1-1/2" ~ 2")	A194-8
15	Lock Device (1-1/2" ~ 2")	SUS304
16	Body Gasket	GRAFOIL®, PTFE
17	End Cap	A351 CF8M, A216 WCB
18	Handle Sleeve (1-1/2" ~ 2")	VINYL PLASTIC
19	Stop Bolt	A193 B8
20	Stop Washer	SUS304
21	Triangular Stopper (3" ~ 6")	SUS304
22	Set Screw (3" ~ 6")	A193-B8
23	Pipe Handle Adapter (3" ~ 6")	A351 CF8
24	Pipe Handle (3" ~ 6")	SUS304
25	Pipe Handle Sleeve (3" ~ 6")	VINYL PLASTIC

SPECIFICATION STANDARDS OF COMPLIANCE

- Design - ASME B16.34, NACE MR0175
- Face to Face: ASME B16.10
- End Flange: ASME B16.5
- Wall Thickness: ASME B16.34
- Inspection & Testing: API 598, and optional API 6D
- Fire Safe: API 607, ISO 10497

What do you need today?™

HIGH PURITY
CleanFLOW

PRO-SPEC
PROCESS SPECIFIC
WWW.PRO-SPEC.NET

QUALITY FLOWS
THROUGH US

Specifications subject to change. Please visit www.SVF.net for the latest updates on this Data Sheet. All Data Sheets posted on our website supersede all prior publications • [Document #SVF_41Rev3_Data_Sheet • Series 41 Rev3 Data Sheet - 10/05/2011]

www.SVF.net

SVF Flow Controls, Inc. • 13560 Larwin Circle • Santa Fe Springs, CA 90670 • Tel: 1.800.783.7836 • FAX: 562.802.3114
Sales@SVF.net • Visit our website: www.SVF.net • © SVF Flow Controls, Inc. • Specifications subject to change without notice



Scan the barcode with your
SmartPhone app and view the
latest publication of this document

Series 41 Rev3 Flanged Ball Valve

ANSI Class 150, Standard Port
Sizes 1-1/2" ~ 6"

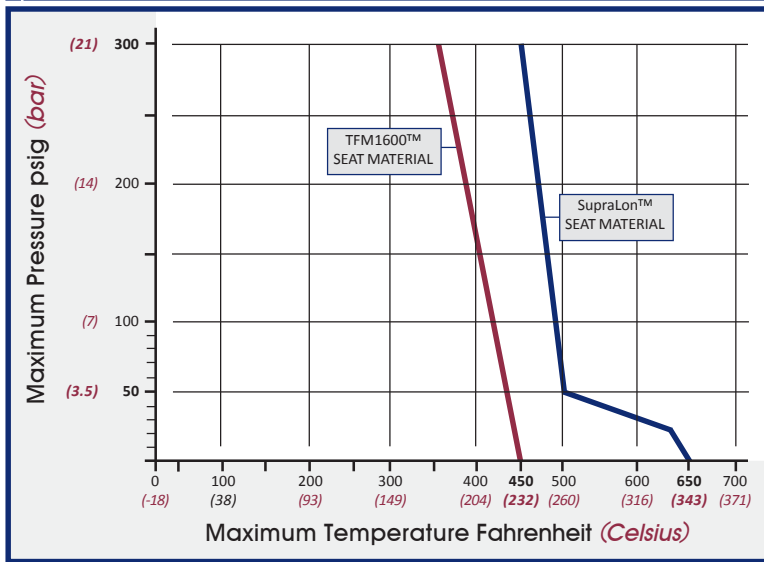
41
Rev3

DIMENSIONS, WEIGHT, Cv, TORQUE

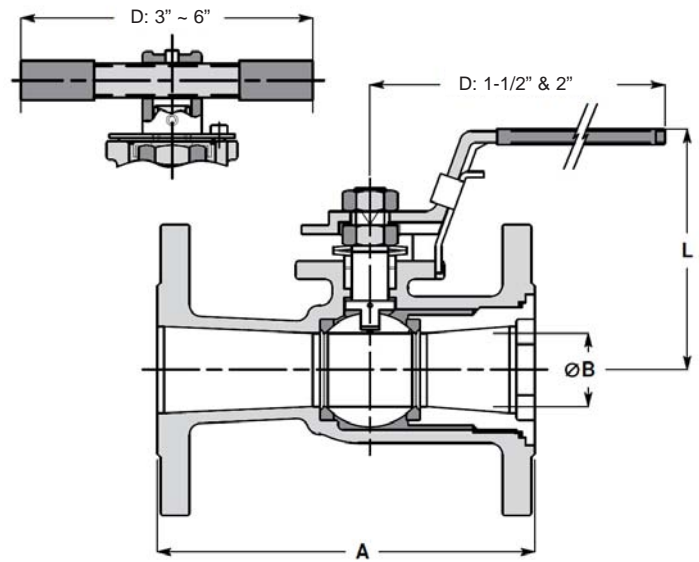
Torque* Tables

Size	A		B		D		L		Weight.		Cv	TFM1600™		SupraLon™	
	in.	mm	in.	mm	in.	mm	in.	mm	lbs	kg		in-lb _f	Nm	in-lb _f	Nm
1-1/2"	6.50	165	1.26	32	7.87	200	4.13	105	10	4.6	130	208	24	254	29
2"	7.00	178	1.50	38	7.87	200	4.49	114	15	6.8	200	299	34	368	42
3"	8.00	203	2.37	60	11.81	300	5.59	142	31	14.2	450	598	68	728	82
4"	9.00	229	2.99	76	15.75	400	7.66	195	48	22.0	600	988	112	1209	137
6"	10.50	267	3.94	100	15.75	400	9.50	241	95	43.0	1100	1328	150	1532	173

41 REV3 - PRESSURE/TEMPERATURE CHART



* At full differential pressure



HOW TO ORDER SERIES 41 REV3 BALL VALVES

SERIES	BODY, BALL & STEM	SEAT	BODY SEAL	REV DESIGNATION	SIZE
41 = Standard Port ANSI Class 150 Flanged	4 = Carbon Steel Body A216 WCB with 316 SS Ball - A351 CF8M and 316 SS Stem - SUS 316 6 = 316 Stainless Steel Body A351 CF8M with 316 SS Ball - A351 CF8M and 316 SS Stem - SUS 316	A = TFM1600™ S = SupraLon™	G = GRAFOIL® T = PTFE	R3 = Rev3	15 = 1-1/2" 20 = 2" 30 = 3" 40 = 4" 60 = 6"
<p>Order Example: (416AGR315)</p> <p>Example Description: Standard Port, 316 Stainless Steel Body, Ball & Stem, TFM1600™ Seat, GRAFOIL® Body Seal, Rev3, 1-1/2" Size</p>					
41	6	A	G	R3	15

*NOTE: Valves
with PTFE
Body Seals &
Stem Seals are
no longer
fire safe

Specifications subject to change. Please visit www.SVF.net for the latest updates on this Data Sheet. All Data Sheets posted on our website supersede all prior publications • [Document #SVF_41Rev3_Data_Sheet • Series 41 Rev3 Data Sheet - 10/05/2011]